

740 MERIDIAN  
south beach, miami  
A condominium

Developed by | STRIPEY LLC

Built by |



[www.stripeydev.com](http://www.stripeydev.com)

# The most Desirable Street in South Beach



ORAL REPRESENTATIONS CANNOT BE RELIED UPON AS CORRECTLY STATING REPRESENTATIONS OF THE DEVELOPER. FOR CORRECT REPRESENTATIONS, MAKE REFERENCE TO THIS BROCHURE AND TO THE DOCUMENTS REQUIRED BY SECTION 718.503, FLORIDA STATUTES, TO BE FURNISHED BY A DEVELOPER TO A BUYER OR LESSEE.

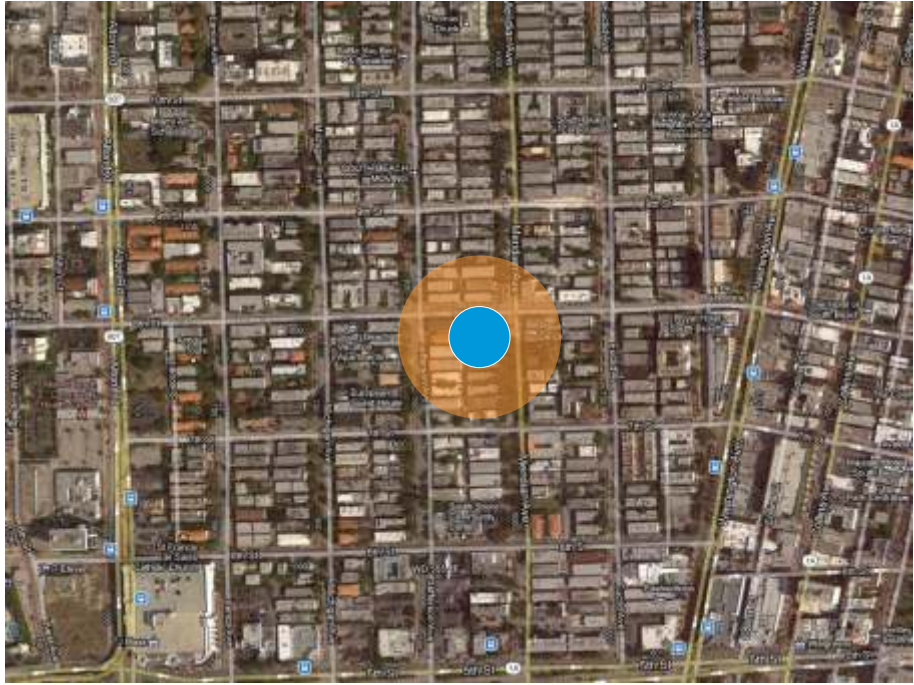
Developed by | **STRIPEY LLC** | **740 MERIDIAN**  
 A condominium | south beach, miami

Built by | 

**NOTE:**  
 Plans, materials and specifications are subject to architectural and other revisions at the sole discretion of the developer, builder or architect, or as may be requested by law. Floor plans shown are not to any particular scale. All dimensions are approximate, and floor plans are subject to change. Oral representations cannot be relied upon to correctly state the representations of the developer. For correct representations, make reference to the document required by section 718.503 Florida Statutes to be furnished by a developer to a buyer or lessee. This is not an offer to sell, or solicitation of offers to buy the condominium units in state where such offer of solicitation cannot be made.

In the heart of the famous South Beach, steps from 5th Street, main entrance to Miami Beach and the prestigious South of Fifth neighborhood and the fastest connection to the Miami International Airport. Six blocks away from the world recognized Ocean Drive. A brand new Publix Supermarket, Walgreen's Pharmacy, Best Buy and Ross Store just two blocks away. A few blocks south of the renowned "Lincoln Road" pedestrian street and restaurant corridor. Walking distance of one of the sexiest beaches in the world.

**740 MERIDIAN, SOUTH BEACH. MIAMI**



**ART GALLERIES / MUSEUMS**

- (1) ART CENTER S. FLORIDA
- (2) ASHMORE GALLERY
- (3) BASS MUSEUM
- (4) BETTCHER GALLERY
- (5) BRITTO CENTRAL
- (6) CAREL GALLERY
- (7) HOWARD AUSTIN FELD
- (8) MARCEL GALLERY
- (9) WOLFSONIAN MUSEUM

**NIGHTCLUBS**

- (1) DREAM
- (2) BED (Closed)
- (3) CAMEO / VICE
- (4) MANGO'S
- (5) MANSION
- (6) MOKAI
- (7) MYNT
- (8) PEARL
- (9) OPIUM GARDEN / PRIV?
- (10) ROK BAR
- (11) ROSE BAR / DELANO
- (12) SCORE
- (13) SKY BAR MIAMI BEACH
- (14) TWIST

**LOUNGES**

- (1) AUTOMATIC SLIM'S
- (2) BUCK 15
- (3) CLEVELANDER
- (4) FLUTE
- (5) LAUNDRY BAR
- (6) NOBU LOUNGE
- (7) PURDY LOUNGE
- (8) SPIRE at the HOTEL
- (9) THE ROOM
- (10) WET WILLIE'S
- (11) ZEE LOUNGE / NATIONAL

**BEACH CLUBS**

- (12) DI LIDO BEACH CLUB
- (13) La PIAGGIA
- (14) NIKKI BEACH CLUB
- (15) RALEIGH HOTEL

NOTE: Plans, materials and specifications are subject to architectural and other revisions at the sole discretion of the developer, builder or architect, or as may be requested by law. Floor plans shown are not to any particular scale. All dimensions are approximate, and floor plans are subject to change. Oral representations cannot be relied upon to correctly state the representations of the developer. For correct representations, make reference to the document required by section 718.503 Florida Statutes to be furnished by a developer to a buyer or lessee. This is not an offer to sell, or solicitation of offers to buy the condominium units in state where such offer of solicitation cannot be made.



Developed by | STRIPEY LLC | 740 MERIDIAN  
A condominium south beach, miami

Built by | 

NOTE:  
Plans, materials and specifications are subject to architectural and other revisions at the sole discretion of the developer, builder or architect, or as may be requested by law. Floor plans shown are not to any particular scale. All dimensions are approximate, and floor plans are subject to change. Oral representations cannot be relied upon to correctly state the representations of the developer. For correct representations, make reference to the document required by section 718.503 Florida Statutes to be furnished by a developer to a buyer or lessee. This is not an offer to sell, or solicitation of offers to buy the condominium units in state where such offer of solicitation cannot be made.



Developed by | STRIPEY LLC | 740 MERIDIAN  
A condominium | south beach, miami

Built by | 

NOTE:  
Plans, materials and specifications are subject to architectural and other revisions at the sole discretion of the developer, builder or architect, or as may be requested by law. Floor plans shown are not to any particular scale. All dimensions are approximate, and floor plans are subject to change. Oral representations cannot be relied upon to correctly state the representations of the developer. For correct representations, make reference to the document required by section 718.503 Florida Statutes to be furnished by a developer to a buyer or lessee. This is not an offer to sell, or solicitation of offers to buy the condominium units in state where such offer of solicitation cannot be made.

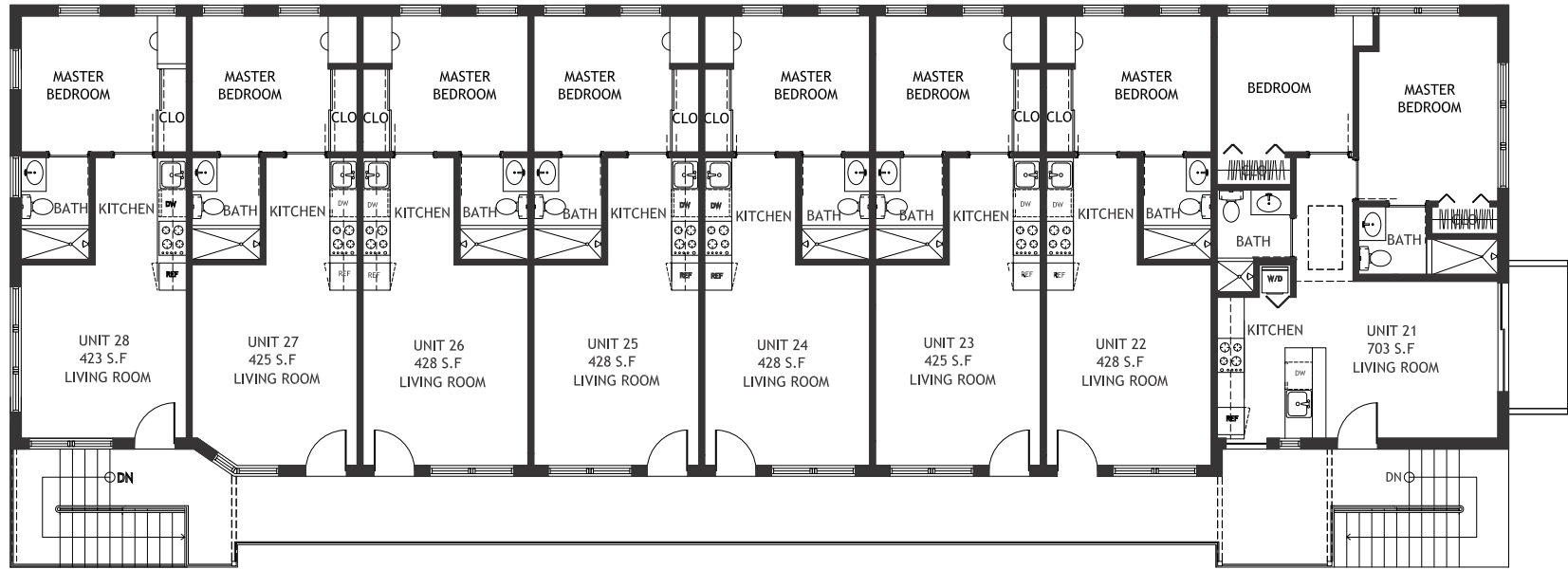


Developed by | **STRIPEY LLC** **740 MERIDIAN**  
 A condominium south beach, miami

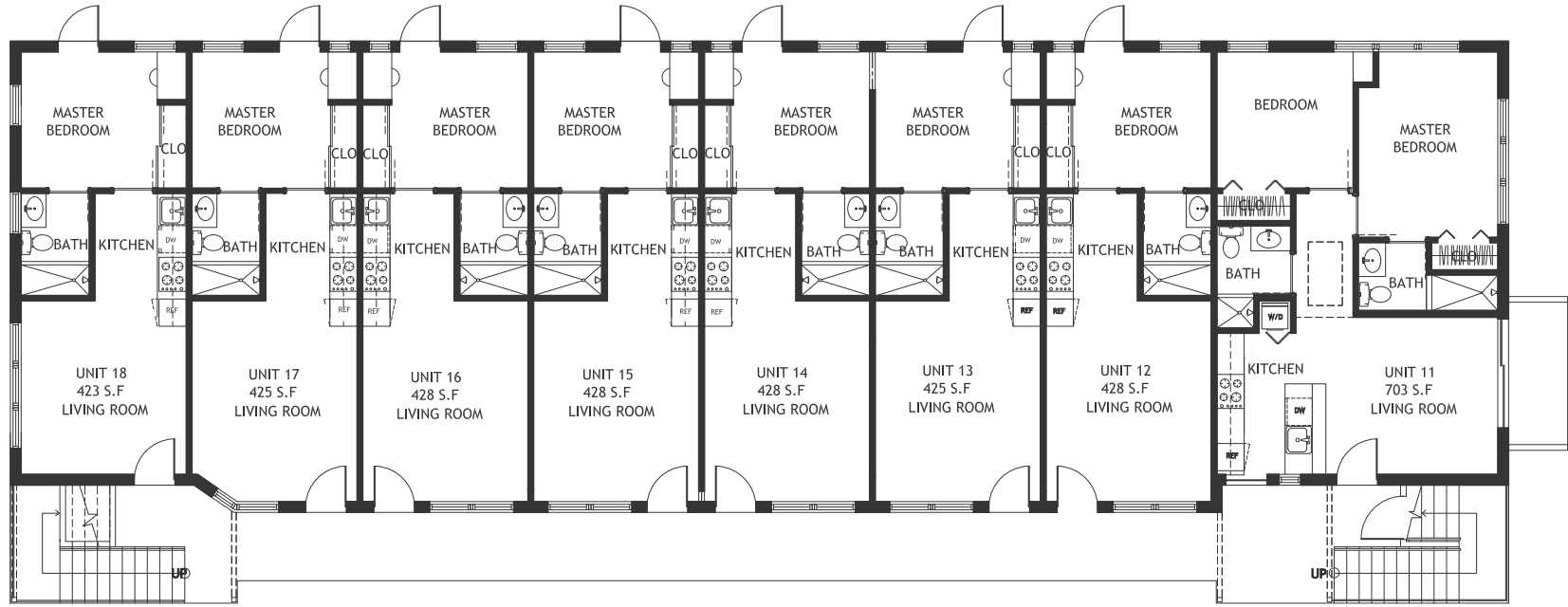
Built by | 

**NOTE:**  
 Plans, materials and specifications are subject to architectural and other revisions at the sole discretion of the developer, builder or architect, or as may be requested by law. Floor plans shown are not to any particular scale. All dimensions are approximate, and floor plans are subject to change. Oral representations cannot be relied upon to correctly state the representations of the developer. For correct representations, make reference to the document required by section 718.503 Florida Statutes to be furnished by a developer to a buyer or lessee. This is not an offer to sell, or solicitation of offers to buy the condominium units in state where such offer of solicitation cannot be made.

# CHARACTERISTICS



**PROPOSED SECOND FLOOR**  
 SCALE 3/16"=1'-0"  
 NOTE: ALL DIMENSIONS ARE APPROXIMATE AND SUBJECT TO LAYOUT VARIANCES AND TO NORMAL CONSTRUCTION TOLERANCES.



**PROPOSED GROUND FLOOR**  
 SCALE 3/16"=1'-0"  
 NOTE: ALL DIMENSIONS ARE APPROXIMATE AND SUBJECT TO LAYOUT VARIANCES AND TO NORMAL CONSTRUCTION TOLERANCES.

**Characteristics:**

- Contemporary Bathroom Fixtures
- Italian Style Kitchen Cabinet
- Granite Counter Tops
- Porcellanato Tile
- Traffic Master Benson Oak Wood 8 in. Wide hard wood flooring
- Dade County Approved Hurricane Resistant Impact windows
- Dade County Approved Hurricane Resistant Impact Doors
- Luscious landscape with palmtrees
- Art DECO Architecture

**Appliances:**

- LG Stainless Steel Refrigerator
- GE Stainless Steel Microwave
- GE Stainless Steel Range
- Stainless Steel Compact Dishwasher

**NOTE:** Plans, materials and specifications are subject to architectural and other revisions at the sole discretion of the developer, builder or architect, or as may be requested by law. Floor plans shown are not to any particular scale. All dimensions are approximate, and floor plans are subject to change. Oral representations cannot be relied upon to correctly state the representations of the developer. For correct representations, make reference to the document required by section 718.503 Florida Statutes to be furnished by a developer to a buyer or lessee. This is not an offer to sell, or solicitation of offers to buy the condominium units in state where such offer of solicitation cannot be made.