

WEST AVENUE
1419

SOUTH BEACH - MIAMI

westavenuemiami.com

LOCATION

Strategically located on one of South Beach's most coveted residential areas.

Less than 20 minutes from Miami International Airport and downtown with direct access through the main entrance to Miami Beach.

1419 West Avenue is near all the conveniences and amenities this area has to offer.

In the heart of everywhere you want to be: enjoy the beaches, fine dining, entertainment, nightlife and world-class shopping.



1419 WEST AVENUE, SOUTH BEACH, MIAMI



westavenuemiami.com

STRIPEY **ART+TEC**
Real Estate Development DEVELOPMENT

SOUTH BEACH AREA

Just a few blocks from the renowned Lincoln Road pedestrian street with exquisite restaurants, movie theater and world-class retail stores.

The white sand beaches and Ocean Drive are within walking distance, ideal for daytime fun and night-life enjoyment.

Major shopping areas are located a few blocks away easily accessible with the convenience of the South Beach Shuttle bus:

The Shops at Fifth & Alton: Best Buy, Ross, TJ Maxx, and Publix.

Collins Avenue Shopping: Diesel, Urban Outfitters, MAC, Armani Exchange, Sephora, etc.

Lincoln Road: Apple Store, Banana Republic, BCBG, H&M, Victoria's Secret, etc.



CHARACTERISTICS:

- Contemporary Bathroom Fixtures
- Italian Style Kitchen Cabinets
- Granite Counter Tops
- Porcellanato Tile
- Dade County Approved Hurricane Resistant Impact windows
- Dade County Approved Hurricane Resistant Impact Doors
- Luscious landscape with palm trees

APPLIANCES:

- Stainless Steel Refrigerator
- Stainless Steel Microwave
- Stainless Steel Range
- Stainless Steel Compact Dishwasher



westavenuemiami.com

STRIPEY **ART+TEC**
Real Estate Development DEVELOPMENT

PROJECT



NOTE:
Plans, materials and specifications are subject to architectural and other revisions at the sole discretion of the developer, builder or architect, or as may be requested by law. Floor plans shown are not to any particular scale. All dimensions are approximate, and floor plans are subject to change. Oral representations cannot be relied upon to correctly state the representations of the developer. For correct representations, make reference to the document required by section 718.503 Florida Statutes to be furnished by a developer to a buyer or lessee. This is not an offer to sell, or solicitation of offers to buy the condominium units in state where such offer of solicitation cannot be made.

westavenuemiami.com

STRIPEY **ART+TEC**
Real Estate Development DEVELOPMENT

PROJECT



NOTE:
Plans, materials and specifications are subject to architectural and other revisions at the sole discretion of the developer, builder or architect, or as may be requested by law. Floor plans shown are not to any particular scale. All dimensions are approximations, and floor plans are subject to change. Civil representations cannot be relied upon to correctly state the representations of the developer. For correct representations, make reference to the document required by section 718.503 Florida Statutes to be furnished by a developer to a buyer or lessee. This is not an offer to sell, or solicitation of offers to buy the condominium units in states where such offer or solicitation cannot be made.

westavenuemiami.com

STRIPEY
Real Estate Development

ART+TEC
DEVELOPMENT

PROJECT



NOTE:
Plans, materials and specifications are subject to architectural and other revisions at the sole discretion of the developer, builder or architect, or as may be requested by law. Floor plans shown are not to any particular scale. All dimensions are approximate, and floor plans are subject to change. Oral representations cannot be relied upon to correctly state the representations of the developer. For correct representations, make reference to the document required by section 718.503 Florida Statutes to be furnished by a developer to a buyer or lessee. This is not an offer to sell, or solicitation of offers to buy the condominium units in state where such offer of solicitation cannot be made.

westavenuemiami.com

STRIPEY
Real Estate Development

ART+TEC
DEVELOPMENT

PROJECT



NOTE: Plans, materials and specifications are subject to architectural and other revisions at the sole discretion of the developer, builder or architect, or as may be requested by law. Floor plans shown are not to any particular scale. All dimensions are approximate, and floor plans are subject to change. Oral representations cannot be relied upon to correctly state the representations of the developer. For correct representations, make reference to the document required by section 718.503 Florida Statutes to be furnished by a developer to a buyer or lessee. This is not an offer to sell, or solicitation of offers to buy the condominium units in state where such offer of solicitation cannot be made.

westavenuemiami.com

STRIPEY **ART+TEC**
Real Estate Development DEVELOPMENT

PROJECT



NOTE: Plans, materials and specifications are subject to architectural and other revisions at the sole discretion of the developer, builder or architect, or as may be requested by law. Floor plans shown are not to any particular scale. All dimensions are approximate, and floor plans are subject to change. Oral representations cannot be relied upon to correctly state the representations of the developer. For correct representations, make reference to the document required by section 718.503 Florida Statutes to be furnished by a developer to a buyer or lessee. This is not an offer to sell, or solicitation of offers to buy the condominium units in state where such offer of solicitation cannot be made.

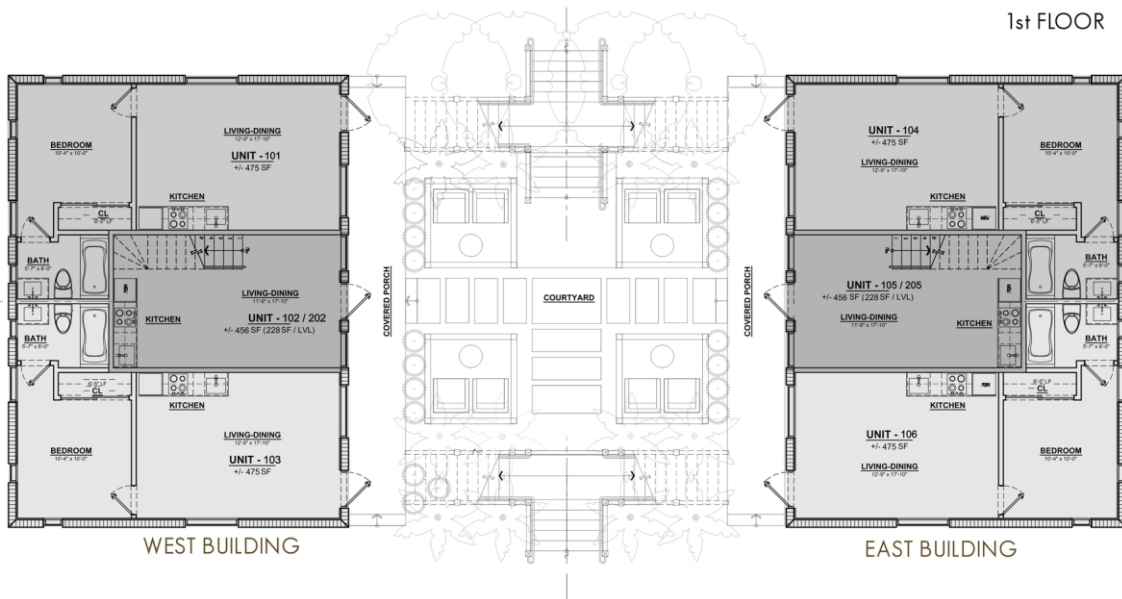
westavenuemiami.com

STRIPEY
Real Estate Development

ART+TEC
DEVELOPMENT

FLOOR PLANS

1st FLOOR



NOTE: Plans, materials and specifications are subject to architectural and other revisions at the sole discretion of the developer, builder or architect, or as may be requested by law. Floor plans shown are not to any particular scale. All dimensions are approximate, and floor plans are subject to change. Oral representations cannot be relied upon to correctly state the representations of the developer. For correct representations, make reference to the document required by section 718.503 Florida Statutes to be furnished by a developer to a buyer or lessee. This is not an offer to sell, or solicitation of offers to buy the condominium units in state where such offer of solicitation cannot be made.

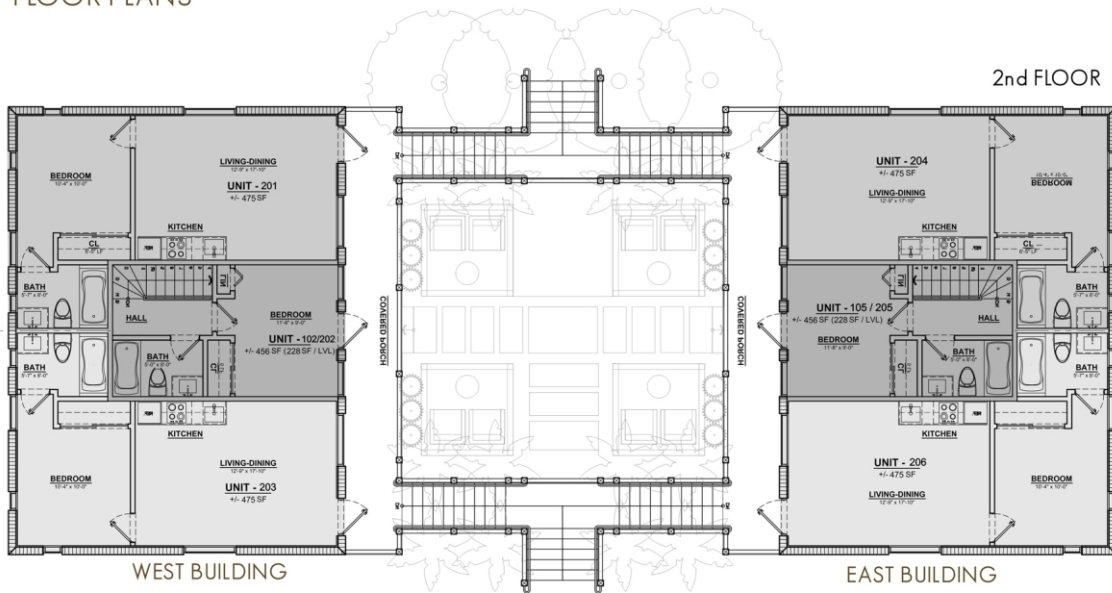
westavenuemiami.com

STRIPEY ART+TEC
Real Estate Development DEVELOPMENT



FLOOR PLANS

2nd FLOOR



NOTE:
Plans, materials and specifications are subject to architectural and other revisions at the sole discretion of the developer, builder or architect, or as may be requested by law. Floor plans shown are not to any particular scale. All dimensions are approximate, and floor plans are subject to change. Oral representations cannot be relied upon to correctly state the representations of the developer. For correct representations, make reference to the document required by section 718.503 Florida Statutes to be furnished by a developer to a buyer or lessee. This is not an offer to sell, or solicitation of offers to buy the condominium units in state where such offer of solicitation cannot be made.

westavenuemiami.com

STRIPEY ART+TEC
Real Estate Development DEVELOPMENT



WESTAVENUE
1419

CONTACT

STRIPEY
Real Estate Development
www.stripeydev.com

ART+TEC
DEVELOPMENT
www.artandtec.net

westavenuemiami.com

